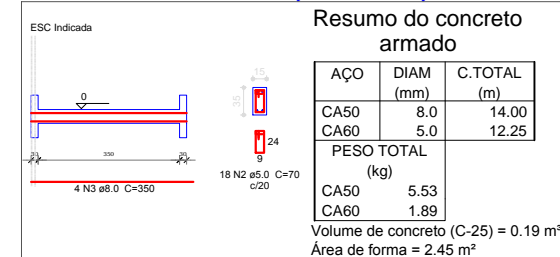
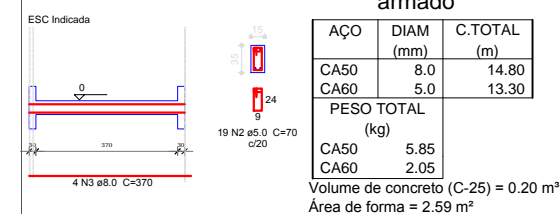


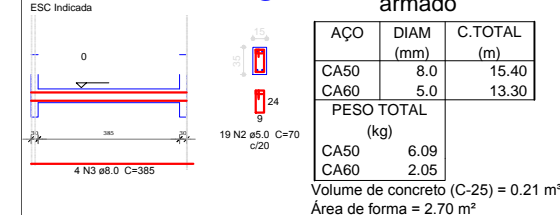
VB22 = VB25;VB32;VB36



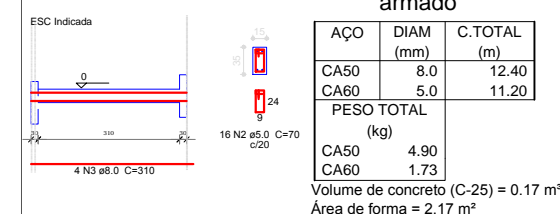
VB23 = VB34



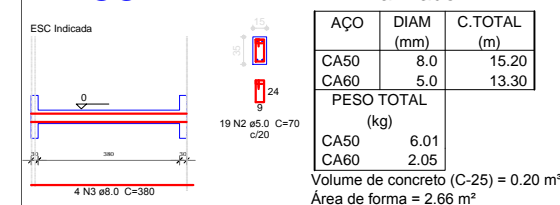
VB24=VB45



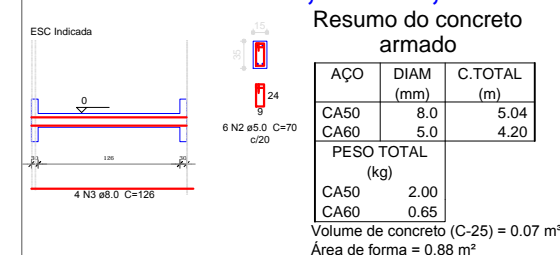
VB29 = VB30



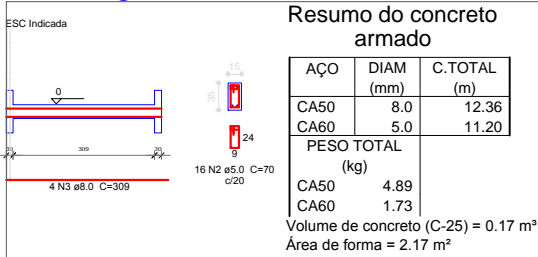
VB35



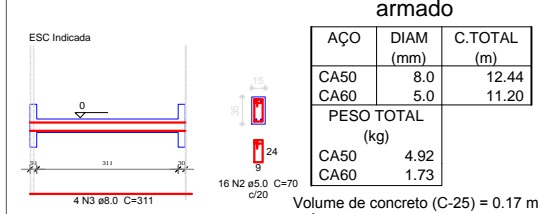
VB38 = VB42;VB49;



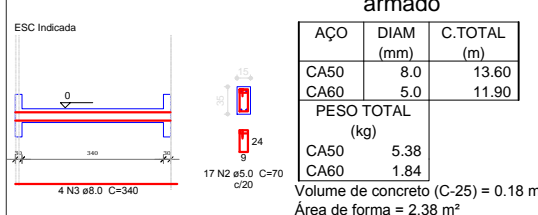
VB40



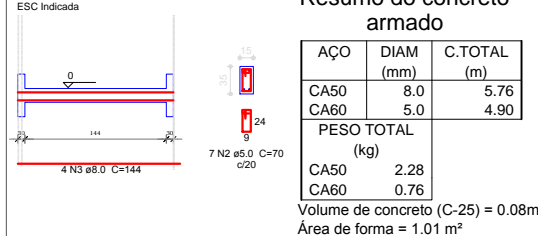
VB41=VB60



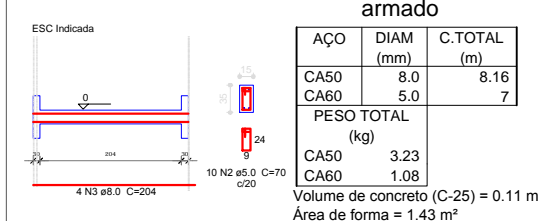
VB43



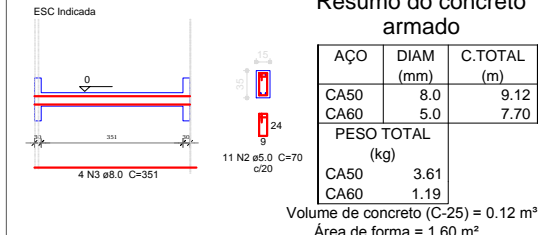
VB47



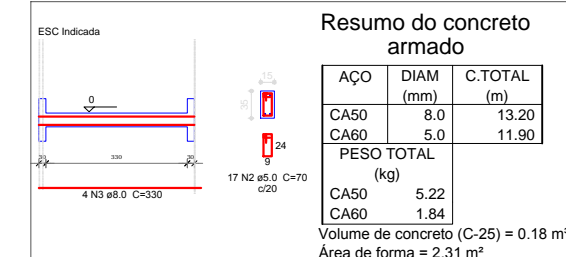
VB48



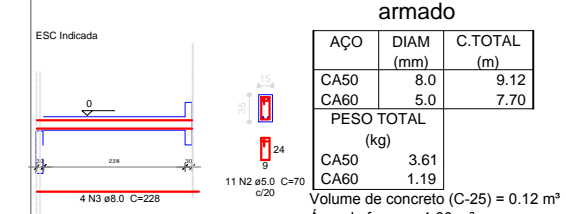
VB50



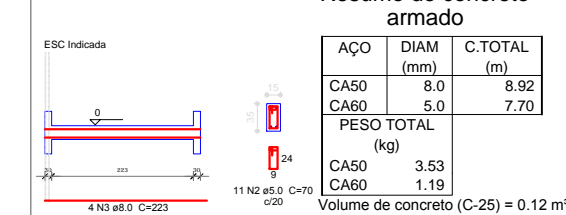
VB51



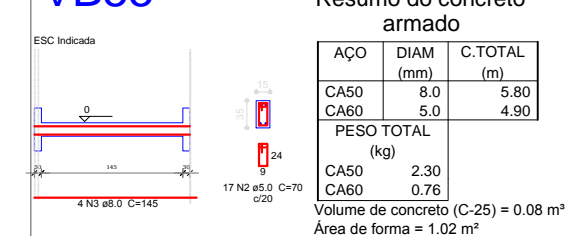
VB53



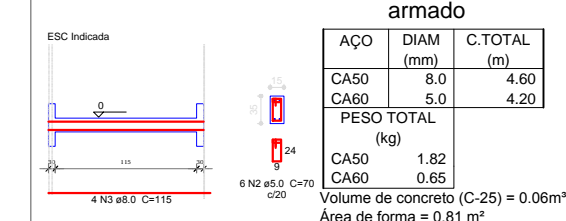
VB54



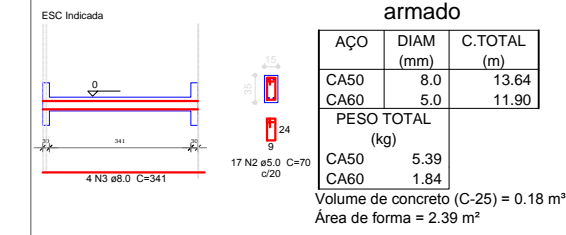
VB55



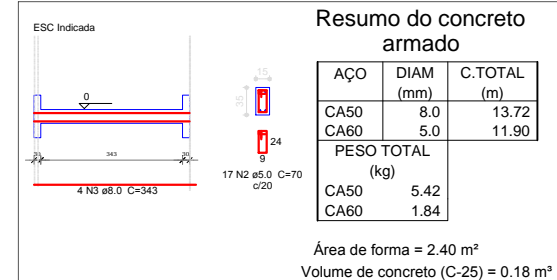
VB56



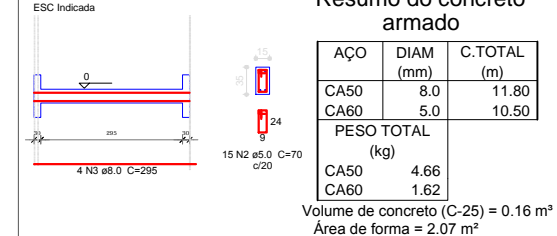
VB57



VB58



VB61



DETALHAMENTO DE VIGAS

Esc: sem



PREFEITURA MUNICIPAL DE
VÁRZEA GRANDE
amar • cuidar • acreditar

PREFEITURA MUNICIPAL DE VÁRZEA GRANDE

Av. Castelo Branco, Espaço Municipal, 2500 - Centro Sul, Várzea Grande/MT
CEP 78125-700 - Fone/Fax: 65 3688 8000

PROJETO:

ABRIGO PARA IDOSOS

OBRA:

CONSTRUÇÃO

LOCALIZAÇÃO:

AVENIDA CASTELO BRANCO

ASSUNTO:

VIGAS BALDRAME BLOCO B

AUTOR DO PROJETO:

AUREO EMANOEL DA SILVA
ENGNEHEIRO CIVIL
CREA-MT042435

UNIDADE:

METRO

ESCALA:

Indicada

DATA:

julho/2019

FOLHA N°

11/11